



10 Stanbridge Park, Bideford, EX39 3RS

£335,000

A beautifully presented three-bedroom detached home with fresh carpets throughout, detached garage with power, generous parking, landscaped gardens, summerhouse, vegetable patch and multiple outdoor seating areas, situated within the highly sought-after Stanbridge Park cul-de-sac.

Description

Beautifully presented throughout and benefiting from freshly fitted carpets, the property offers spacious and versatile accommodation ideally suited to modern family living. The ground floor comprises a welcoming entrance hall, generous open plan living and dining area with garden access, a well-appointed shaker-style kitchen, and a practical utility room. Upstairs are three well-proportioned bedrooms all with fitted wardrobes, including a principal bedroom with en-suite bathroom, together with a stylish family bathroom benefitting from a jacuzzi bathtub.

The rear garden is a particular feature of the property, having been thoughtfully landscaped to create a variety of distinct outdoor spaces. A large patio provides the perfect setting for entertaining and al fresco dining, whilst the lawned garden is complemented by established planting, a productive vegetable patch and an impressive timber summerhouse. At the top of the garden, a secluded shaded seating area offers a peaceful retreat to relax and unwind, all enjoying a good degree of privacy and an attractive leafy backdrop.

A extra long garage with power connected provides excellent storage, workshop potential or secure parking, whilst the generous driveway offers off-road parking for multiple vehicles with ease.

Situated within the highly sought-after Stanbridge Park cul-de-sac on the popular Londonderry Farm Estate, the property enjoys a peaceful setting in one of the area's most desirable residential locations. Conveniently positioned for local amenities, schools, parks and transport links, it is a location that continues to prove popular with families and professionals alike.

Lounge/Dining Room 11'2" x 18'11" (3.41 x 5.78)



Kitchen 11'1" x 9'3" (3.40 x 2.83)



Utility 5'10" x 5'2" (1.79 x 1.59)



Downstairs WC

Bedroom 1 11'1" x 10'3" (3.39 x 3.14)



Ensuite

Bedroom 2 9'6" x 9'9" (2.90 x 2.98)



Bedroom 3 8'11" x 7'3" (2.73 x 2.22)



The photographs used within this marketing material may have been digitally enhanced for presentation purposes. Adjustments may include brightness, contrast, colour balance, sky replacement, removal of temporary items, and minor image corrections. These enhancements are intended solely to improve image quality and presentation and do not materially alter the property's size, layout, features, condition, or surroundings. Prospective purchasers should satisfy themselves as to the accuracy of all information by inspection or other means.

Bathroom 7'3" x 6'2" (2.22 x 1.89)



Garage 8'2" x 17'3" (2.50 x 5.27)

Information

Age - 1996

Tenure - Freehold

Heating - Mains Gas Central Heating via Combi Boiler

Drainage - Mains

Windows - UPVC double glazing throughout

Council Tax - Tax band D

EPC Rating - TBC

Schools:

Kingsley School - 0.33 mi

Bideford College - 0.34 mi

West Croft School - 0.74 mi

St Mary's Church of England Primary School - 0.94 mi

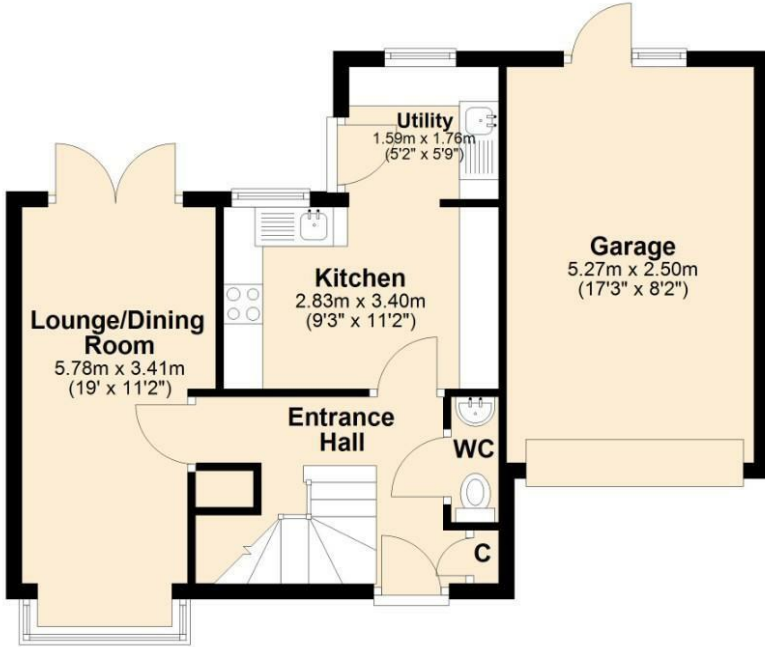
St Helen's Church of England School - 0.96 mi

Note

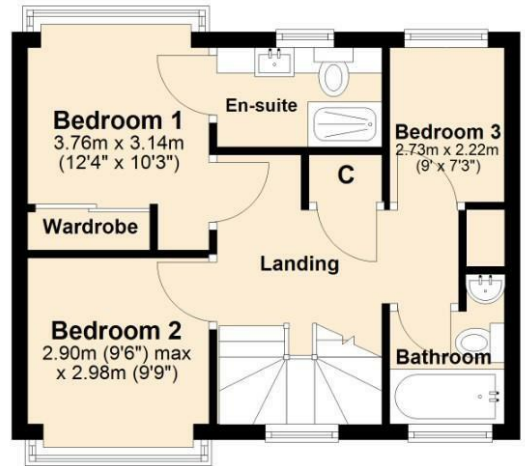
For clarification we wish to inform prospective purchasers that we have prepared these sales particulars as a general guide. Some photographs may have been taken using a wide angle lens. We have not carried out a detailed survey, nor tested the services, appliances and specific fittings. Room sizes should not be relied upon for carpets and furnishings, if there are important matters which are likely to affect your decision to buy, please contact us before viewing the property. Some of the photos have been edited but still represent the true

Floor Plan

Ground Floor

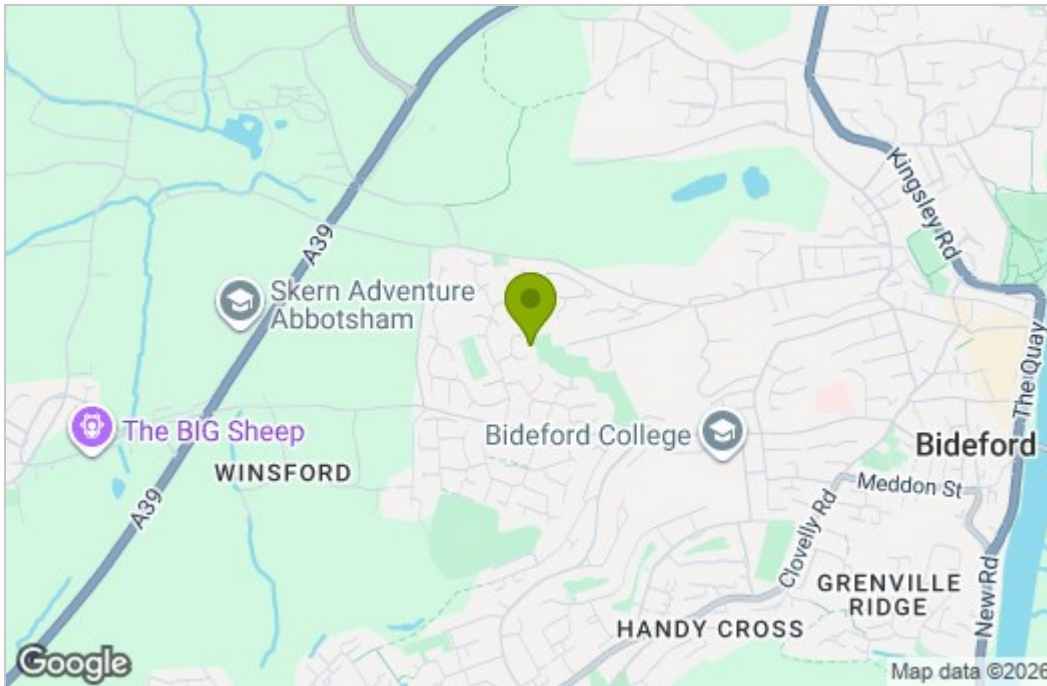


First Floor

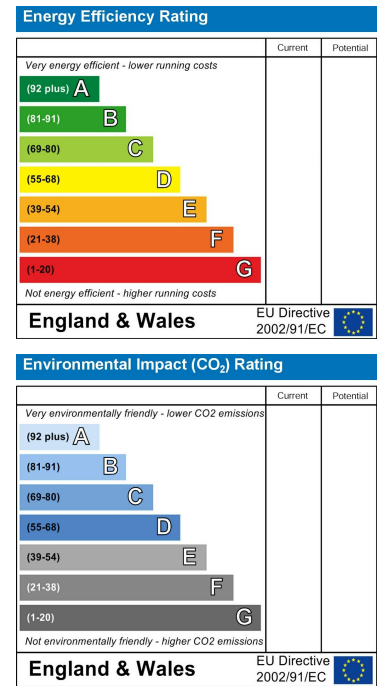


10 Stanbridge Park, Bideford

Area Map



Energy Efficiency Graph



These particulars, whilst believed to be accurate are set out as a general outline only for guidance and do not constitute any part of an offer or contract. Intending purchasers should not rely on them as statements of representation of fact, but must satisfy themselves by inspection or otherwise as to their accuracy. No person in this firm's employment has the authority to make or give any representation or warranty in respect of the property.

Suite 103 Artavia House, Barnstaple, Devon, EX32 8HG
 Tel: 01271377237 Email: enquiries@collyers.biz
 78 Fore Street, KINGSBRIDGE, Devon, TQ7 1PP